



CAAC Design and Construction Update

6-16-2022

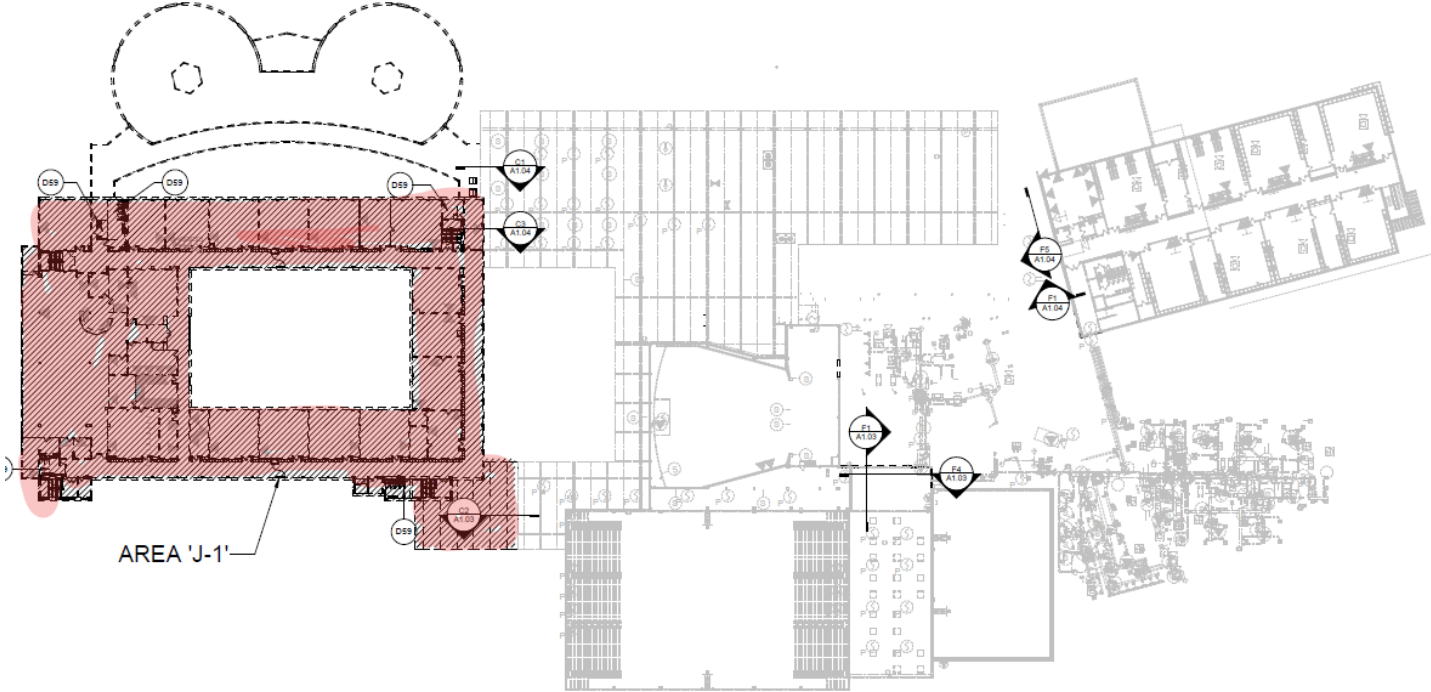


2022 Projects

New Buildings & Additions

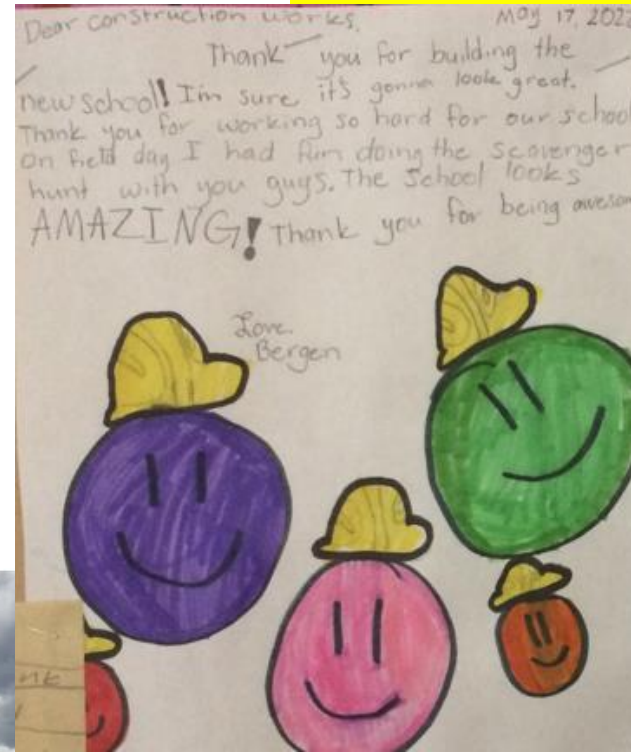
Alameda HS – Demolition Clear Consulting – ESA

Construction



Marshdale ES - Replacement HCM – GC GH Phipps

Construction



Marshdale ES - Replacement
HCM - GC GH Phipps

Construction



D'Evelyn – 8 CR Addition HCM – GC Himmelman

Construction



Evergreen MS Efficiency & Future Ready Construction

AMD – Haselden



Evergreen MS Efficiency & Future Ready Construction

AMD – Haselden



Evergreen HS
Efficiency Future Ready
DLR – CMGC JHL

Construction



Evergreen HS
Efficiency Future Ready
DLR – CMGC JHL

Construction



Evergreen HS
Efficiency Future Ready
DLR – CMGC JHL

Construction



Jeffco Open - Addition HCM - Bassett

Construction



Powderhorn ES - Addition Hollis & Miller – Himmelman

Construction



Powderhorn ES - Addition Hollis & Miller – Himmelman

Construction



Prospect Valley ES - Replacement MOA – GH Phipps

Construction



Prospect Valley ES - Replacement MOA – GH Phipps

Construction



Ralston Valley HS - Addition EUA - Himmelman

Construction



Ralston Valley HS - Addition EUA - Himmelman

Construction



Standley Lake HS - Addition Cannon – FCI Constructors

Construction



Standley Lake HS - Addition Cannon – FCI Constructors

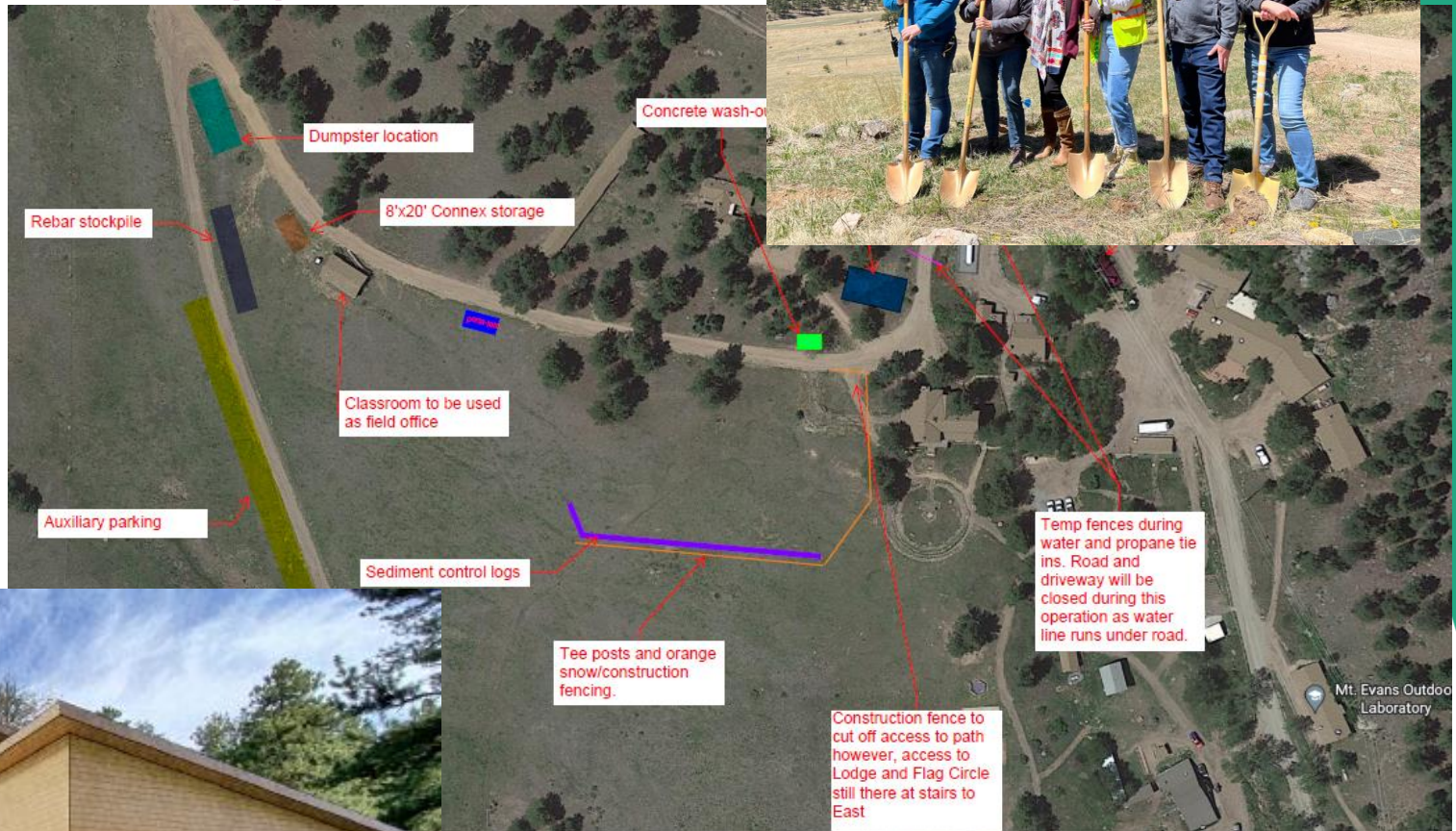
Construction



Efficiency Future Ready Mount Evans OEL

HCM – GH Phipps

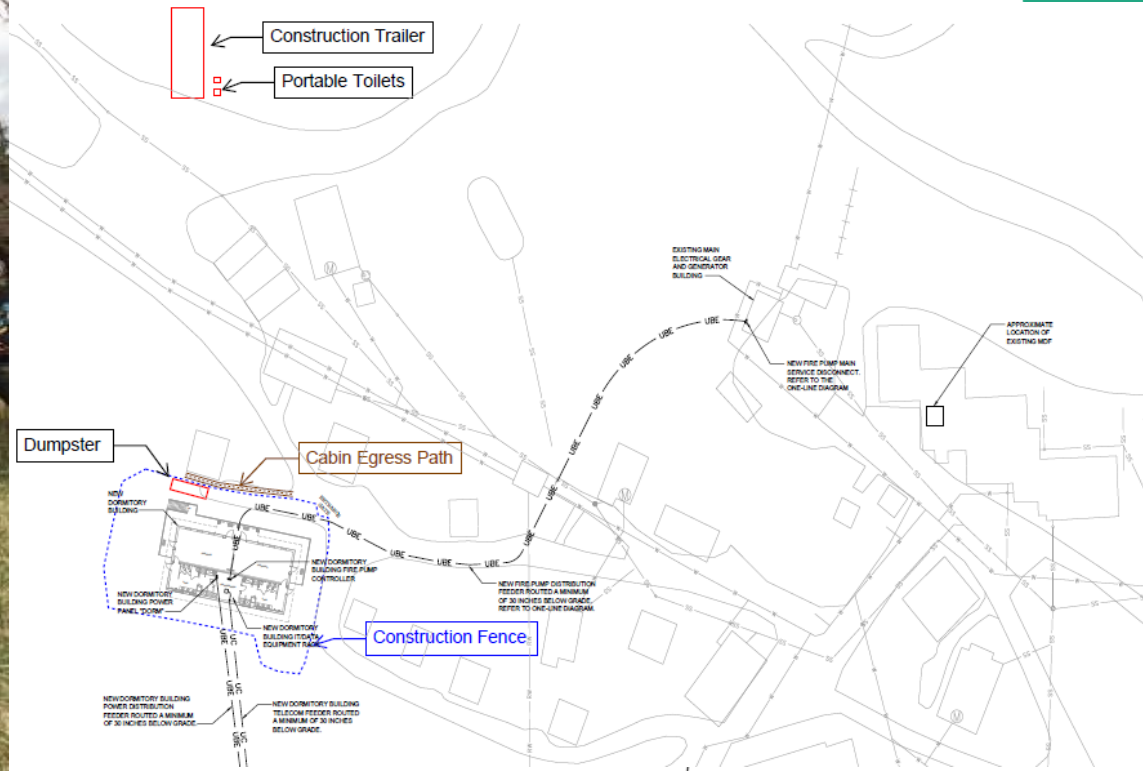
Construction



Efficiency Future Ready Windy Peak OEL

HCM – Bryan

Construction



2022

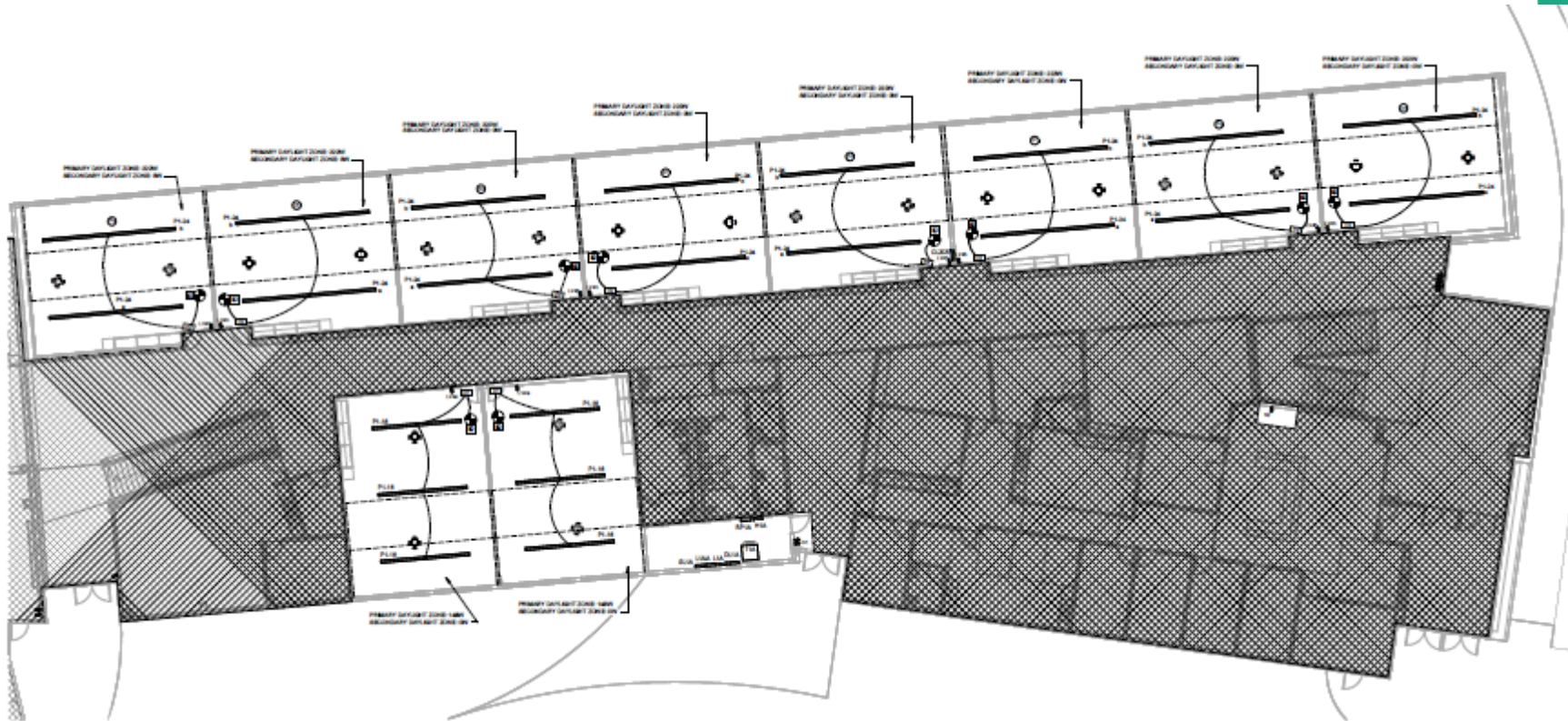
37 - Efficiency Future
Ready
&
DW projects

Efficiency Future Ready Golden HS

Construction

H&M – Singletrack

Pendant fixtures are late – arrive early to mid July



Efficiency Future Ready Mitchell ES

Construction

H&M – Singletrack



Efficiency Future Ready Elk Creek ES

BVH – SCS

Construction



Efficiency Future Ready West Jefferson ES

Construction

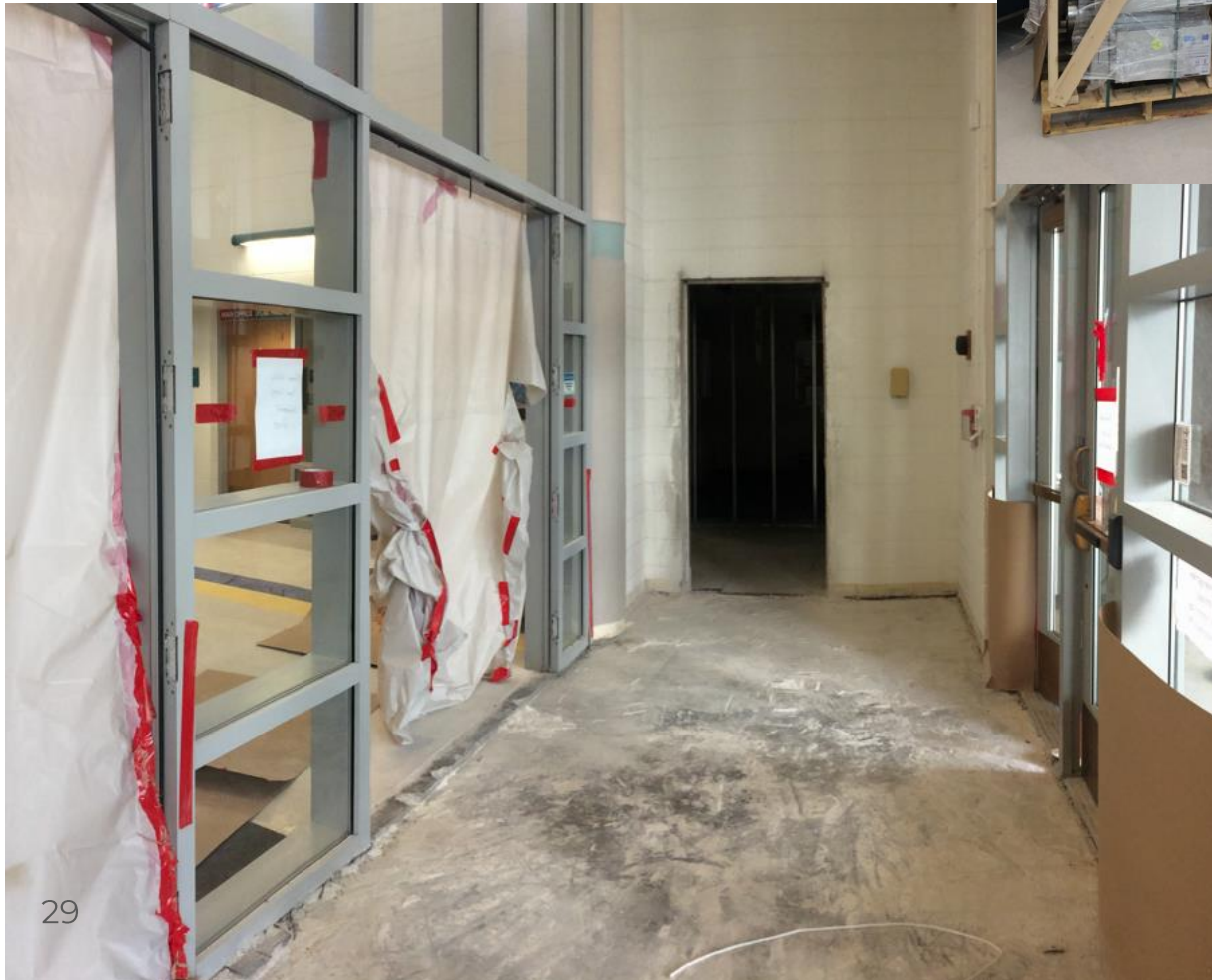
BVH – Bryan



Efficiency Future Ready Emory ES

Treanor HL– Crossland

Construction



Efficiency Future Ready Red Rocks ES

Treanor HL- Crossland

Construction



Efficiency Future Ready Lakewood HS

Construction

HCM – AD Miller



Efficiency Future Ready Westgate ES

Construction

Treanor HL – AD Miller



Efficiency Future Ready Longview HS

Construction

Mellin & Associates – Singletrack



Efficiency Future Ready Shelton ES

Construction

Mellin & Associates – Himmelman



Efficiency Future Ready Stevens ES

Construction

AMD – PG Arnold



Efficiency Future Ready Green Mountain ES

Construction

AMD – PG Arnold



Efficiency Future Ready Thomson ES

AMD – Bryan

Construction



Efficiency Future Ready Stony Creek ES

Jordin – Calahan

Construction



Efficiency Future Ready Bear Creek HS

MOA – Crossland

Construction



Efficiency Future Ready Warder ES

RB+B – Golden Triangle

Construction



Efficiency Future Ready Warren Tech North

Construction

LOA – Golden Triangle



Efficiency Future Ready Arvada West HS

Construction

LOA – Golden Triangle



Efficiency Future Ready Bergen Valley ES

Construction

EUA – Interlock



Efficiency Future Ready Slater ES

Construction

Eidos – Bryan



Efficiency Future Ready Wilmore Davis ES

Construction

Eidos – Mark Young



Efficiency Future Ready North Arvada MS

Construction

Eidos – Bryan



Efficiency Future Ready Peck ES

Construction

Larson Incitti – AD Miller



Efficiency Future Ready Secret ES

Construction

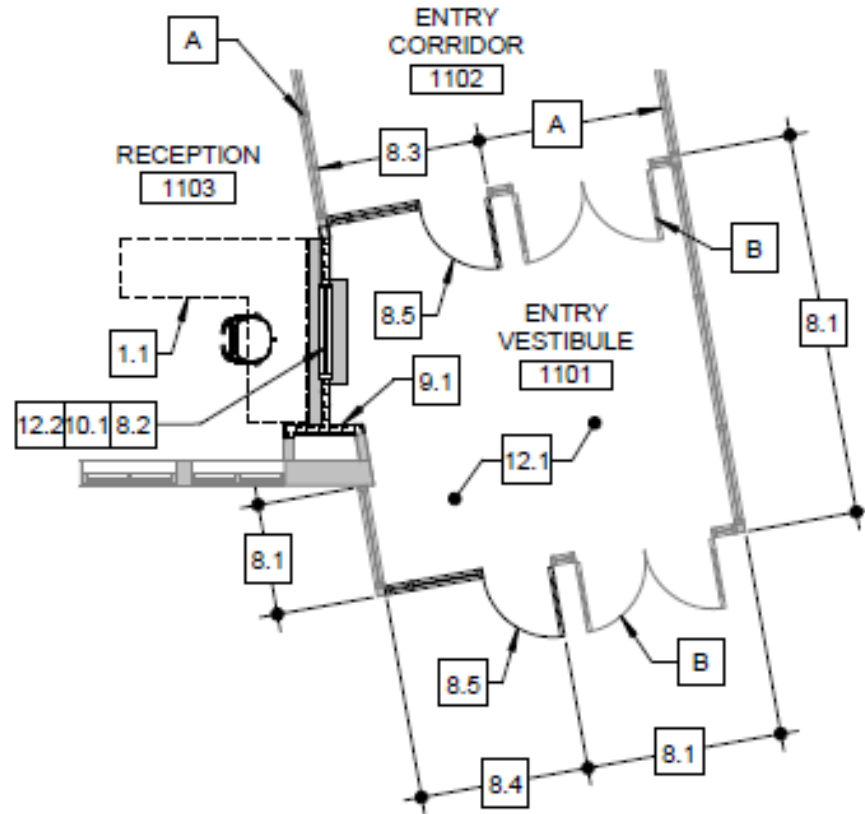
Larson Incitti – AD Miller



Efficiency Future Ready Creighton MS

Construction

Larson Incitti – AD Miller



DW – Roofing
Pennington ES
Roof Tech – Grabau

Construction



DW – Roofing -

Construction

Campbell ES (Grabau), Fairmount ES (FR) ,
S Lakewood ES (DC), & Summit Ridge MS (UM)
SR+DK



S Lakewood



Campbell



Fairmount

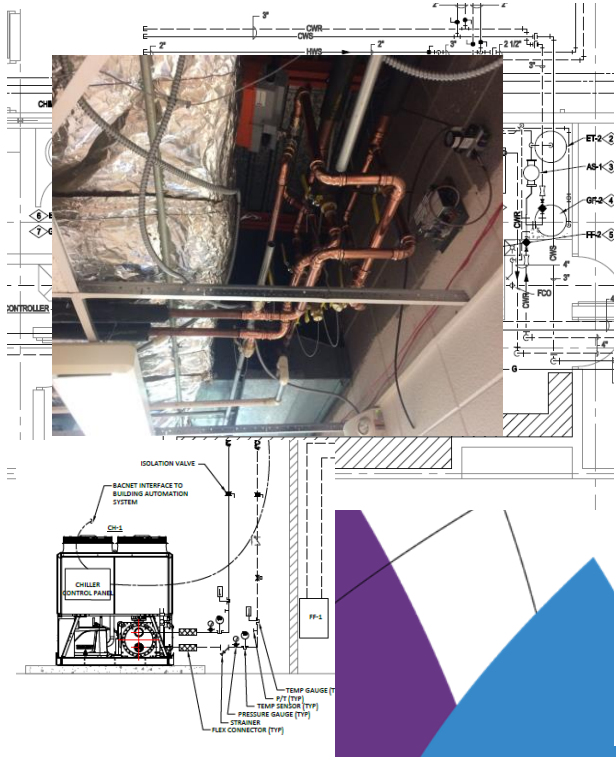


Summit Ridge

DW Mechanical 2022 Campbell ES AHU & Chiller, Little ES RTU & Van Arsdale ES RTU

Columbine Engineering – US Engineering

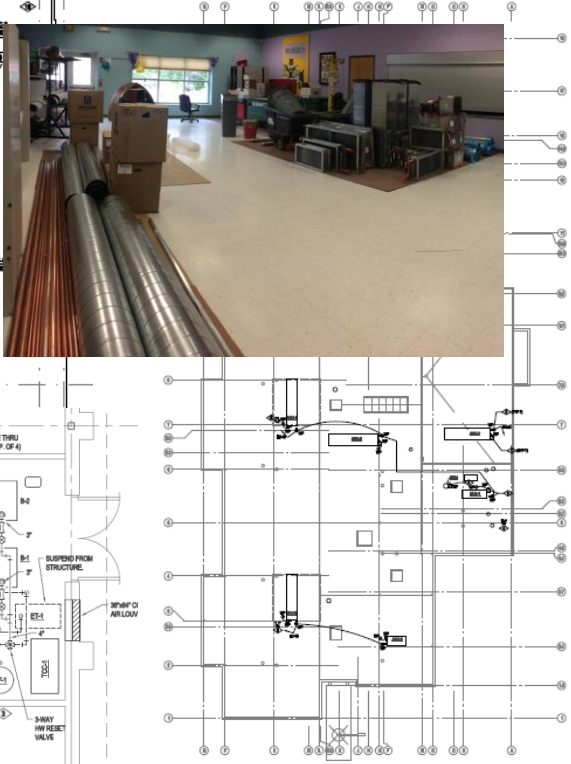
Campbell ES



Little ES

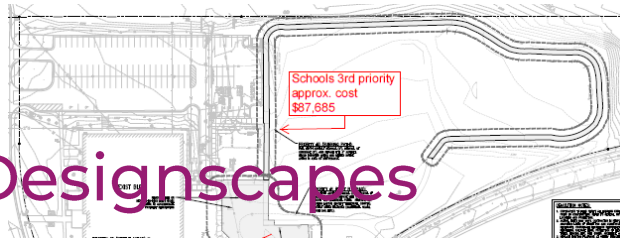


Van Arsdale ES

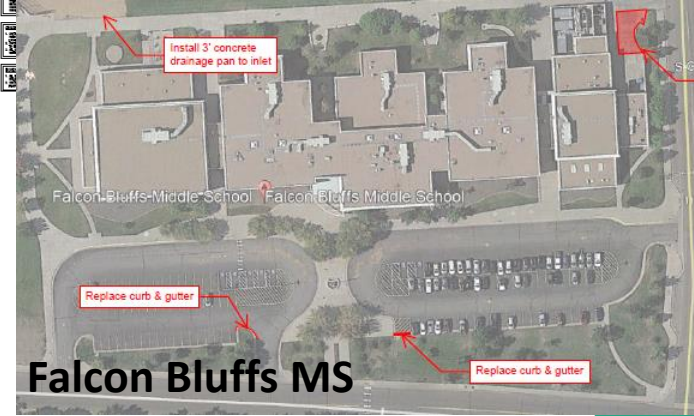


DW Paving 2022 JVA – Colorado Designscapes

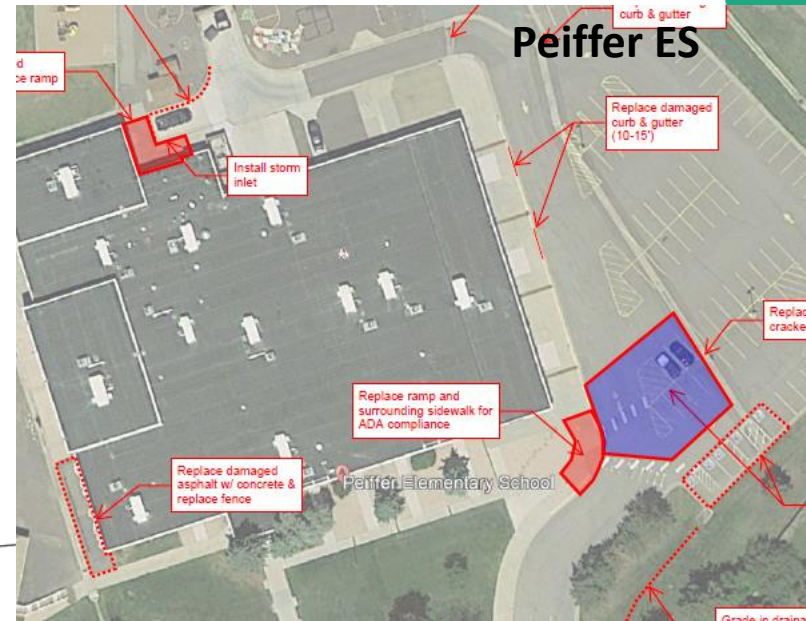
Construction



Thomson ES



South Lakewood ES



DW – Flooring I
Falcon Bluffs MS,
Summit Ridge MS, & Peiffer ES

AMD – PG Arnold

Summit5 MS



Falcon Bluffs MS



Peiffer ES



DW – Flooring I

Construction

*Governor's Ranch ES, Mt Carbon ES,
Rooney Ranch ES*
AMD – SCS



Mt Carbon ES



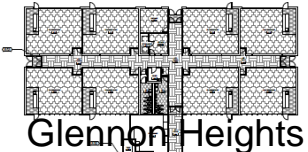
Rooney Ranch ES



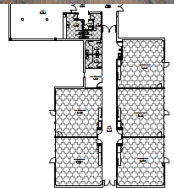
Governor's Ranch ES

DW – Flooring II

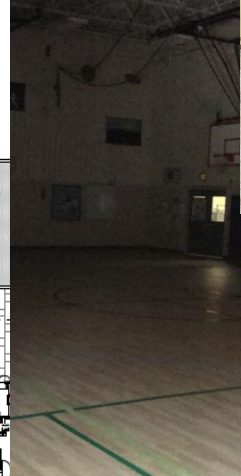
Glennon Heights ES, Little ES, Parr ES
Pennington ES, S Lakewood ES
Swanson ES, Van Arsdale ES
studiotrope – McCauley Constructors



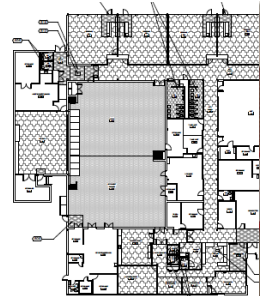
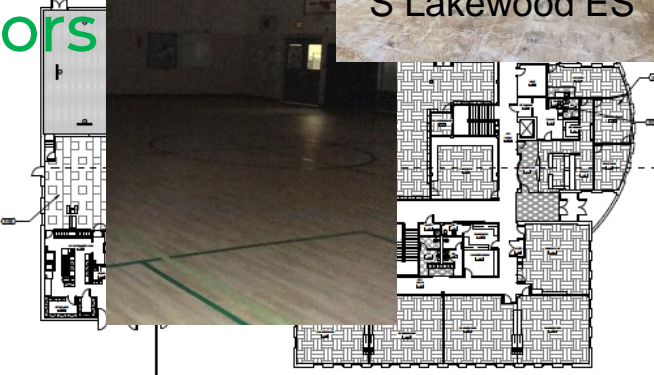
Glennon Heights



Parr ES



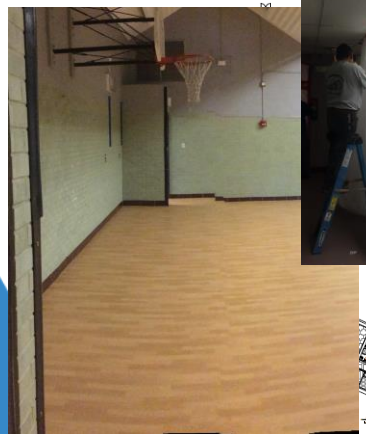
S Lakewood ES



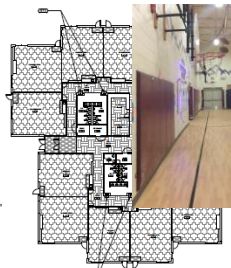
Swanson ES



Little ES



Pennington ES



Van Arsdale ES

DW Playgrounds II 2022 Lime Green – T2

Confirm location of ADA HC ramp

GENERAL NOTES

1. ALL WORK SHALL BE IN ACCORDANCE WITH THE LATEST EDITIONS OF THE FOLLOWING CODES AND STANDARDS:
 - a. AIAA 117.1-2019
 - b. ADA 2010
 - c. ASCE 7-16
 - d. IBC 2018
 - e. IRC 2015
 - f. IS 1015
 - g. NFPA 704
 - h. NFPA 96
 - i. NFPA 101
 - j. NFPA 102
 - k. NFPA 103
 - l. NFPA 104
 - m. NFPA 105
 - n. NFPA 106
 - o. NFPA 107
 - p. NFPA 108
 - q. NFPA 109
 - r. NFPA 110
 - s. NFPA 111
 - t. NFPA 112
 - u. NFPA 113
 - v. NFPA 114
 - w. NFPA 115
 - x. NFPA 116
 - y. NFPA 117
 - z. NFPA 118
 - aa. NFPA 119
 - ab. NFPA 120
 - ac. NFPA 121
 - ad. NFPA 122
 - ae. NFPA 123
 - af. NFPA 124
 - ag. NFPA 125
 - ah. NFPA 126
 - ai. NFPA 127
 - aj. NFPA 128
 - ak. NFPA 129
 - al. NFPA 130
 - am. NFPA 131
 - an. NFPA 132
 - ao. NFPA 133
 - ap. NFPA 134
 - aq. NFPA 135
 - ar. NFPA 136
 - as. NFPA 137
 - at. NFPA 138
 - au. NFPA 139
 - av. NFPA 140
 - aw. NFPA 141
 - ax. NFPA 142
 - ay. NFPA 143
 - az. NFPA 144
 - ba. NFPA 145
 - bb. NFPA 146
 - bc. NFPA 147
 - bd. NFPA 148
 - be. NFPA 149
 - bf. NFPA 150
 - bg. NFPA 151
 - bh. NFPA 152
 - bi. NFPA 153
 - bj. NFPA 154
 - bk. NFPA 155
 - bl. NFPA 156
 - bm. NFPA 157
 - bn. NFPA 158
 - bo. NFPA 159
 - bp. NFPA 160
 - bq. NFPA 161
 - br. NFPA 162
 - bs. NFPA 163
 - bt. NFPA 164
 - bu. NFPA 165
 - bv. NFPA 166
 - bw. NFPA 167
 - bx. NFPA 168
 - by. NFPA 169
 - bz. NFPA 170
 - ca. NFPA 171
 - cb. NFPA 172
 - cc. NFPA 173
 - cd. NFPA 174
 - ce. NFPA 175
 - cf. NFPA 176
 - cg. NFPA 177
 - ch. NFPA 178
 - ci. NFPA 179
 - cj. NFPA 180
 - ck. NFPA 181
 - cl. NFPA 182
 - cm. NFPA 183
 - cn. NFPA 184
 - co. NFPA 185
 - cp. NFPA 186
 - cq. NFPA 187
 - cr. NFPA 188
 - cs. NFPA 189
 - ct. NFPA 190
 - cu. NFPA 191
 - cv. NFPA 192
 - cw. NFPA 193
 - cx. NFPA 194
 - cy. NFPA 195
 - cz. NFPA 196
 - da. NFPA 197
 - db. NFPA 198
 - dc. NFPA 199
 - dd. NFPA 200
2. ALL MATERIALS SHALL BE APPROVED BY THE ARCHITECT PRIOR TO INSTALLATION.
3. ALL WORK SHALL BE COMPLETED WITHIN THE SPECIFIED TIME FRAME.
4. ALL WORK SHALL BE DONE IN ACCORDANCE WITH THE LATEST EDITIONS OF THE FOLLOWING CODES AND STANDARDS:
 - a. AIAA 117.1-2019
 - b. ADA 2010
 - c. ASCE 7-16
 - d. IBC 2018
 - e. IRC 2015
 - f. IS 1015
 - g. NFPA 704
 - h. NFPA 96
 - i. NFPA 101
 - j. NFPA 102
 - k. NFPA 103
 - l. NFPA 104
 - m. NFPA 105
 - n. NFPA 106
 - o. NFPA 107
 - p. NFPA 108
 - q. NFPA 109
 - r. NFPA 110
 - s. NFPA 111
 - t. NFPA 112
 - u. NFPA 113
 - v. NFPA 114
 - w. NFPA 115
 - x. NFPA 116
 - y. NFPA 117
 - z. NFPA 118
 - aa. NFPA 119
 - ab. NFPA 120
 - ac. NFPA 121
 - ad. NFPA 122
 - ae. NFPA 123
 - af. NFPA 124
 - ag. NFPA 125
 - ah. NFPA 126
 - ai. NFPA 127
 - aj. NFPA 128
 - ak. NFPA 129
 - al. NFPA 130
 - am. NFPA 131
 - an. NFPA 132
 - ao. NFPA 133
 - ap. NFPA 134
 - aq. NFPA 135
 - ar. NFPA 136
 - as. NFPA 137
 - at. NFPA 138
 - au. NFPA 139
 - av. NFPA 140
 - aw. NFPA 141
 - ax. NFPA 142
 - ay. NFPA 143
 - az. NFPA 144
 - ba. NFPA 145
 - bb. NFPA 146
 - bc. NFPA 147
 - bd. NFPA 148
 - be. NFPA 149
 - bf. NFPA 150
 - bg. NFPA 151
 - bh. NFPA 152
 - bi. NFPA 153
 - bj. NFPA 154
 - bk. NFPA 155
 - bl. NFPA 156
 - bm. NFPA 157
 - bn. NFPA 158
 - bo. NFPA 159
 - bp. NFPA 160
 - bq. NFPA 161
 - br. NFPA 162
 - bs. NFPA 163
 - bt. NFPA 164
 - bu. NFPA 165
 - bv. NFPA 166
 - bw. NFPA 167
 - bx. NFPA 168
 - by. NFPA 169
 - bz. NFPA 170
 - ca. NFPA 171
 - cb. NFPA 172
 - cc. NFPA 173
 - cd. NFPA 174
 - ce. NFPA 175
 - cf. NFPA 176
 - cg. NFPA 177
 - ch. NFPA 178
 - ci. NFPA 179
 - cj. NFPA 180
 - ck. NFPA 181
 - cl. NFPA 182
 - cm. NFPA 183
 - cn. NFPA 184
 - co. NFPA 185
 - cp. NFPA 186
 - cq. NFPA 187
 - cr. NFPA 188
 - cs. NFPA 189
 - ct. NFPA 190
 - cu. NFPA 191
 - cv. NFPA 192
 - cw. NFPA 193
 - cx. NFPA 194
 - cy. NFPA 195
 - cz. NFPA 196
 - da. NFPA 197
 - db. NFPA 198
 - dc. NFPA 199
 - dd. NFPA 200

KEY NOTES

1. ALL WORK SHALL BE COMPLETED WITHIN THE SPECIFIED TIME FRAME.
2. ALL MATERIALS SHALL BE APPROVED BY THE ARCHITECT PRIOR TO INSTALLATION.
3. ALL WORK SHALL BE DONE IN ACCORDANCE WITH THE LATEST EDITIONS OF THE FOLLOWING CODES AND STANDARDS:
 - a. AIAA 117.1-2019
 - b. ADA 2010
 - c. ASCE 7-16
 - d. IBC 2018
 - e. IRC 2015
 - f. IS 1015
 - g. NFPA 704
 - h. NFPA 96
 - i. NFPA 101
 - j. NFPA 102
 - k. NFPA 103
 - l. NFPA 104
 - m. NFPA 105
 - n. NFPA 106
 - o. NFPA 107
 - p. NFPA 108
 - q. NFPA 109
 - r. NFPA 110
 - s. NFPA 111
 - t. NFPA 112
 - u. NFPA 113
 - v. NFPA 114
 - w. NFPA 115
 - x. NFPA 116
 - y. NFPA 117
 - z. NFPA 118
 - aa. NFPA 119
 - ab. NFPA 120
 - ac. NFPA 121
 - ad. NFPA 122
 - ae. NFPA 123
 - af. NFPA 124
 - ag. NFPA 125
 - ah. NFPA 126
 - ai. NFPA 127
 - aj. NFPA 128
 - ak. NFPA 129
 - al. NFPA 130
 - am. NFPA 131
 - an. NFPA 132
 - ao. NFPA 133
 - ap. NFPA 134
 - aq. NFPA 135
 - ar. NFPA 136
 - as. NFPA 137
 - at. NFPA 138
 - au. NFPA 139
 - av. NFPA 140
 - aw. NFPA 141
 - ax. NFPA 142
 - ay. NFPA 143
 - az. NFPA 144
 - ba. NFPA 145
 - bb. NFPA 146
 - bc. NFPA 147
 - bd. NFPA 148
 - be. NFPA 149
 - bf. NFPA 150
 - bg. NFPA 151
 - bh. NFPA 152
 - bi. NFPA 153
 - bj. NFPA 154
 - bk. NFPA 155
 - bl. NFPA 156
 - bm. NFPA 157
 - bn. NFPA 158
 - bo. NFPA 159
 - bp. NFPA 160
 - bq. NFPA 161
 - br. NFPA 162
 - bs. NFPA 163
 - bt. NFPA 164
 - bu. NFPA 165
 - bv. NFPA 166
 - bw. NFPA 167
 - bx. NFPA 168
 - by. NFPA 169
 - bz. NFPA 170
 - ca. NFPA 171
 - cb. NFPA 172
 - cc. NFPA 173
 - cd. NFPA 174
 - ce. NFPA 175
 - cf. NFPA 176
 - cg. NFPA 177
 - ch. NFPA 178
 - ci. NFPA 179
 - cj. NFPA 180
 - ck. NFPA 181
 - cl. NFPA 182
 - cm. NFPA 183
 - cn. NFPA 184
 - co. NFPA 185
 - cp. NFPA 186
 - cq. NFPA 187
 - cr. NFPA 188
 - cs. NFPA 189
 - ct. NFPA 190
 - cu. NFPA 191
 - cv. NFPA 192
 - cw. NFPA 193
 - cx. NFPA 194
 - cy. NFPA 195
 - cz. NFPA 196
 - da. NFPA 197
 - db. NFPA 198
 - dc. NFPA 199
 - dd. NFPA 200

SYMBOLS LEGEND

1. ALL WORK SHALL BE COMPLETED WITHIN THE SPECIFIED TIME FRAME.

2. ALL MATERIALS SHALL BE APPROVED BY THE ARCHITECT PRIOR TO INSTALLATION.

3. ALL WORK SHALL BE DONE IN ACCORDANCE WITH THE LATEST EDITIONS OF THE FOLLOWING CODES AND STANDARDS:

- a. AIAA 117.1-2019
- b. ADA 2010
- c. ASCE 7-16
- d. IBC 2018
- e. IRC 2015
- f. IS 1015
- g. NFPA 704
- h. NFPA 96
- i. NFPA 101
- j. NFPA 102
- k. NFPA 103
- l. NFPA 104
- m. NFPA 105
- n. NFPA 106
- o. NFPA 107
- p. NFPA 108
- q. NFPA 109
- r. NFPA 110
- s. NFPA 111
- t. NFPA 112
- u. NFPA 113
- v. NFPA 114
- w. NFPA 115
- x. NFPA 116
- y. NFPA 117
- z. NFPA 118
- aa. NFPA 119
- ab. NFPA 120
- ac. NFPA 121
- ad. NFPA 122
- ae. NFPA 123
- af. NFPA 124
- ag. NFPA 125
- ah. NFPA 126
- ai. NFPA 127
- aj. NFPA 128
- ak. NFPA 129
- al. NFPA 130
- am. NFPA 131
- an. NFPA 132
- ao. NFPA 133
- ap. NFPA 134
- aq. NFPA 135
- ar. NFPA 136
- as. NFPA 137
- at. NFPA 138
- au. NFPA 139
- av. NFPA 140
- aw. NFPA 141
- ax. NFPA 142
- ay. NFPA 143
- az. NFPA 144
- ba. NFPA 145
- bb. NFPA 146
- bc. NFPA 147
- bd. NFPA 148
- be. NFPA 149
- bf. NFPA 150
- bg. NFPA 151
- bh. NFPA 152
- bi. NFPA 153
- bj. NFPA 154
- bk. NFPA 155
- bl. NFPA 156
- bm. NFPA 157
- bn. NFPA 158
- bo. NFPA 159
- bp. NFPA 160
- bq. NFPA 161
- br. NFPA 162
- bs. NFPA 163
- bt. NFPA 164
- bu. NFPA 165
- bv. NFPA 166
- bw. NFPA 167
- bx. NFPA 168
- by. NFPA 169
- bz. NFPA 170
- ca. NFPA 171
- cb. NFPA 172
- cc. NFPA 173
- cd. NFPA 174
- ce. NFPA 175
- cf. NFPA 176
- cg. NFPA 177
- ch. NFPA 178
- ci. NFPA 179
- cj. NFPA 180
- ck. NFPA 181
- cl. NFPA 182
- cm. NFPA 183
- cn. NFPA 184
- co. NFPA 185
- cp. NFPA 186
- cq. NFPA 187
- cr. NFPA 188
- cs. NFPA 189
- ct. NFPA 190
- cu. NFPA 191
- cv. NFPA 192
- cw. NFPA 193
- cx. NFPA 194
- cy. NFPA 195
- cz. NFPA 196
- da. NFPA 197
- db. NFPA 198
- dc. NFPA 199
- dd. NFPA 200

**JEFFCO PUBLIC SCHOOLS
CAMPBELL ELEMENTARY
PLAYGROUND IMPROVEMENTS**
5000 Oak Street, Aurora, CO 80007

Campbell ES

**JEFFCO PUBLIC SCHOOLS
FAIRMOUNT ELEMENTARY
PLAYGROUND IMPROVEMENTS**
1895 W. 85TH AVE., GOLDEN, CO 80403

PROJECT ID: _____
DATE: _____
SCALE: _____
PROJECT NO.: _____
PROJECT NAME: _____
PROJECT LOCATION: _____
PROJECT OWNER: _____
PROJECT ARCHITECT: _____
PROJECT ENGINEER: _____
PROJECT CONTRACTOR: _____

MATERIALS PLAN
-201
BY: _____
DATE: _____

Fairmount ES

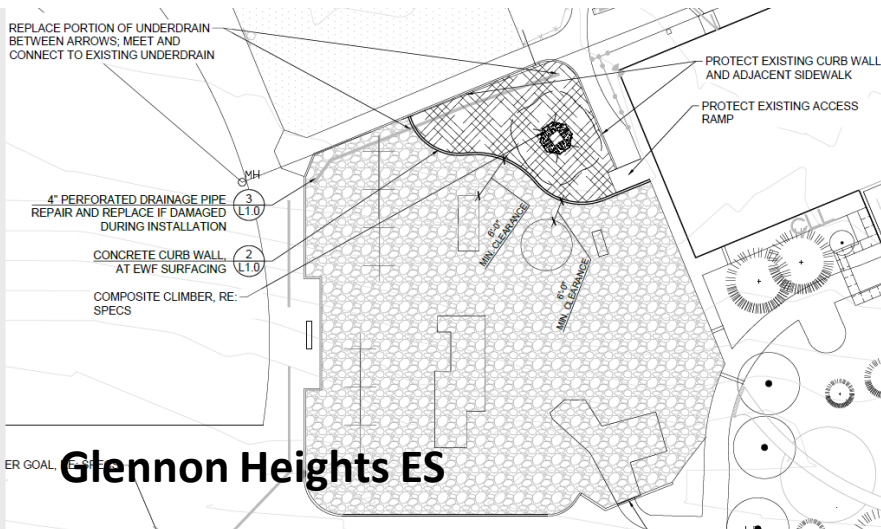
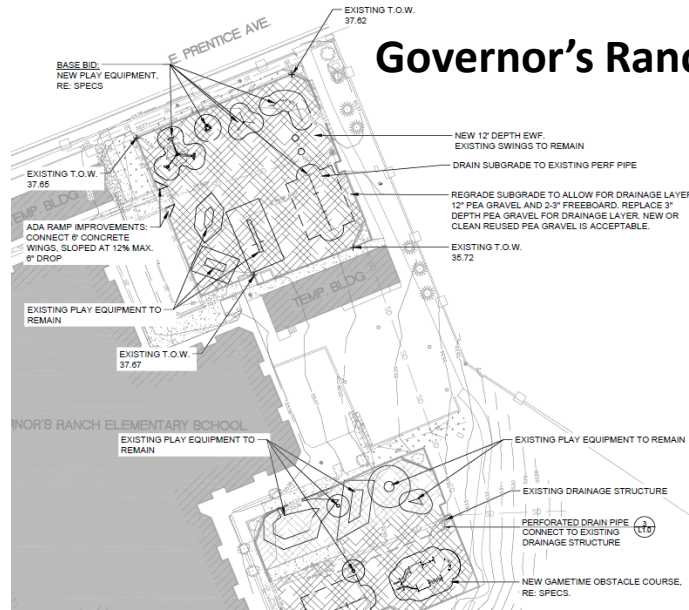
DW Playgrounds I 2022 Design Concepts – Arrow J

Peiffer ES



Mt. Carbon ES

Governor's Ranch ES



Glennon Heights ES

DW LED 2022

Ackerman – CMGC McKinstry

Construction Documents



1. Brady
2. Bradford North
3. Bradford South
4. Ute Meadows ES
5. Leawood ES
6. Normandy ES
7. Rooney Ranch ES
8. Creighton MS
9. Moore MS
10. Mandalay MS
11. Deer Creek MS
12. Lawrence
13. Weber ES
14. Meiklejohn
15. West Woods
16. Chatfield HS
17. Dakota Ridge HS

Security Glass Installation 11 - Schools

Swanson 90% Glennon Heights
Arvada West S Lakewood 15%
Campbell Little 75%
Fairmount Parr - Complete
Bear Creek K8 Pennington
Summit Ridge



2023

35 - Efficiency Future

Ready

&

DW projects

Efficiency Future Ready Wheat Ridge HS

Eidos – TBD

Design
Development
Bid October



2023 New Efficiency Future Ready & DW Projects

Location	Sched	Description
UTE Meadows	9/1/2022	Late Summer Re-Bid Efficiency & Future Ready
Blue Heron	9/1/2022	Late Summer Re-Bid Efficiency & Future Ready
Mortensen	9/1/2022	Late Summer Re-Bid Efficiency & Future Ready
Shaffer	9/1/2022	Late Summer Re-Bid Efficiency & Future Ready
DW FA Upgrade	9/1/2022	FA Upgrade required by Fire Department - Pomona, D' Evelyn, Lakewood HS
DW LED	9/1/2022	Blue Heron, Mortensen, Shaffer, Bergen Valley
Swanson	9/1/2022	Efficiency & Future Ready
Van Arsdale	9/1/2022	Efficiency & Future Ready
Oberon	9/1/2022	Addition
Governors Ranch	9/1/2022	Efficiency & Future Ready
Bear Creek K-8	9/1/2022	Efficiency & Future Ready
Falcon Bluffs MS	9/1/2022	Efficiency & Future Ready
Pennington ES	9/1/2022	Add one section of roof to raise mech unit
Campbell	9/1/2022	Efficiency & Future Ready
Molholm	9/1/2022	Addition
Fairmount Mechanical	9/1/2022	Late Summer Re-Bid 2022 HVAC Project
DW Mechanical 2023	9/1/2022	Westwoods \$1,174,950 Bradford South \$1,304,100 Sobesky (old stevens) \$777,000 boiler priority may be

Location	Sched	Description
Glennon Heights	9/1/2022	Efficiency & Future Ready
Edgewater	9/1/2022	Addition
Ken Caryl	9/1/2022	Efficiency & Future Ready -
Little	9/1/2022	Efficiency & Future Ready
Parr	9/1/2022	Efficiency & Future Ready
S Lakewood	9/1/2022	Efficiency & Future Ready - 2 air handlers are shot - not in scope
Connections	9/1/2022	Efficiency & Future Ready
Coal Creek K8	9/1/2022	Efficiency & Future Ready
Warren Tech Central	9/1/2022	Efficiency & Future Ready -
Deer Creek/ Mandalay ffe / Moore MS ff	9/1/2022	Late Summer Bid Efficiency & Future Ready
Kendallvue	9/1/2022	Efficiency & Future Ready
Mt Carbon	9/1/2022	Efficiency & Future Ready
Peiffer	9/1/2022	Efficiency & Future Ready
Summit Ridge	9/1/2022	Efficiency & Future Ready
Drake Middle	9/1/2022	Efficiency & Future Ready
Bergen Meadow	9/1/2022	Efficiency & Future Ready
Dunstan MS	9/1/2022	Efficiency & Future Ready

Next Meeting 7/21/22